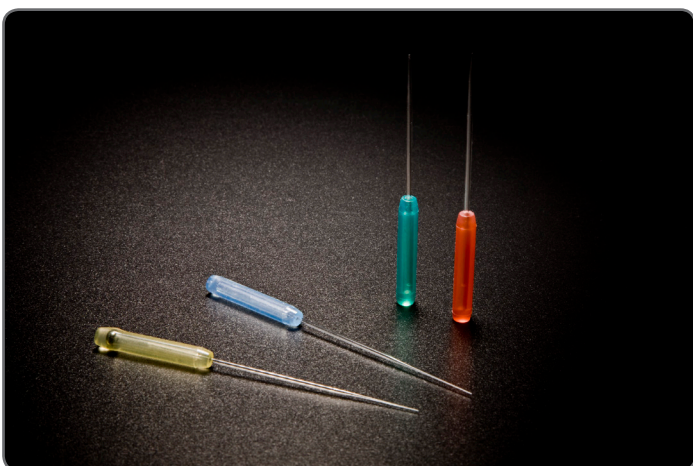
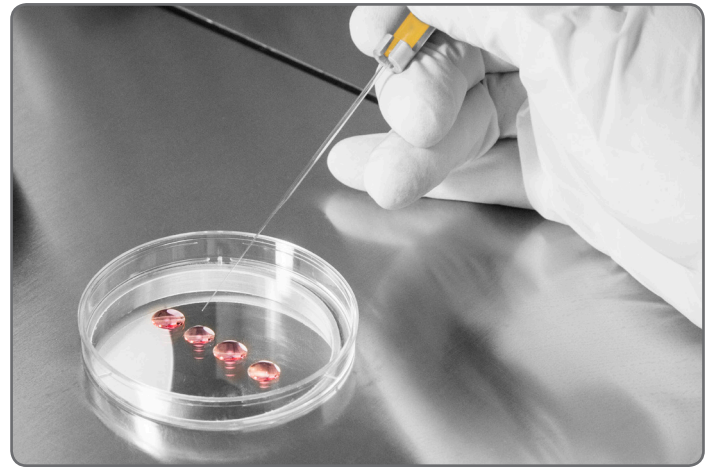
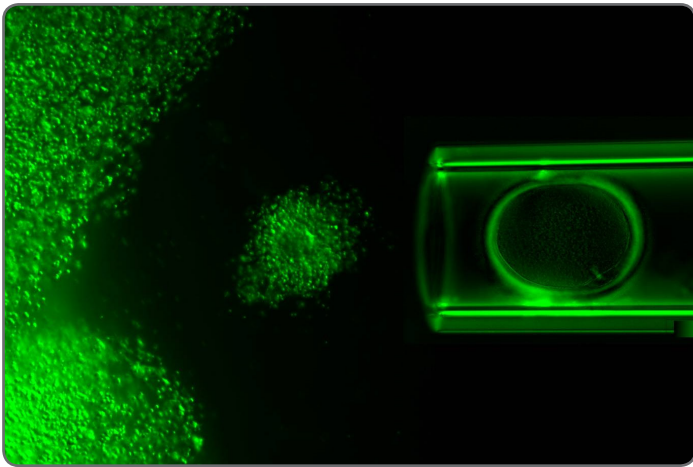


Synga Classic

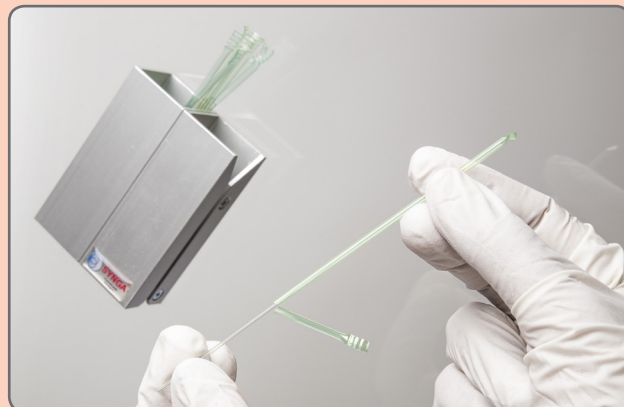
Denudation and Manipulation System for Streamlined Routines in IVF Labs



Synga Classic

Synga Classic is a price-effective and user-friendly system of glass pipettes for oocyte denudation or gamete and embryo handling. Colour coding of bulbs and straws allows for straightforward differentiation of diameters. High quality borosilicate glass minimizes the risk of oil attaching to the inner surface — no oil clogging.

Synga pipettes are individually packed for sterility and available in multipacks for convenience and economy. All Synga pipettes are sterile and MEA tested.



Description

Denudation SG Pipette

Denudation SG Pipette

Denudation SG Pipette

Denudation SG Pipette

Manipulation SG Pipette

Blastocyst SG Pipette

Inner

Ø 130 µm

Ø 140 µm

Ø 150 µm

Ø 160 µm

Ø 180 µm

Ø 250 µm

Package

5 × 10 pipettes

5 × 10 pipettes

5 × 10 pipettes

5 × 10 pipettes

5 × 10 pipettes

5 × 10 pipettes

Colour

red



green



white



white



yellow



blue



Denudation & Manipulation - products

An experienced technician inspects every pipette to guarantee their mechanical integrity before release. This means that all pipettes are free from glass fragments and other residues. Automated measurement of diameter assures that each pipette meets the specified tolerances.

Synga pipettes are protected by three layers of sterility. Each pipette is packed individually and remains sterile until its straw cover is cut open — guaranteed sterility.



Denudation 140 μm , 50 pieces
Ref No. SG-140S-50



Manipulation 180 μm , 50 pieces
Ref No. SG-180-50

Two lengths of pipettes - S or L

Denudation diameters of pipettes are produced either with functional part 14 mm long, marked S in reference number, or with functional part 29 mm long, marked L.

Four types of bulbs - Soft, ExtraSoft, VI or SA

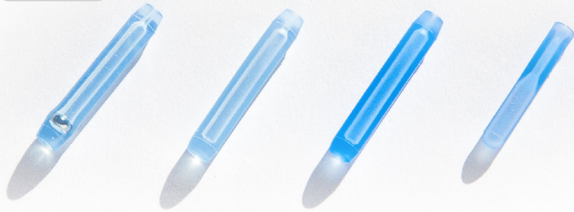
The pipettes come with specially designed sterile silicone bulbs. The bulb has a smaller volume than the pipette to eliminate the risk of oocyte trapping.

VI bulbs are thinner and softer to allow for individual needs.
SA bulbs have a small metal ball inserted to work with SA system.



Synga Accessories

Bulbs



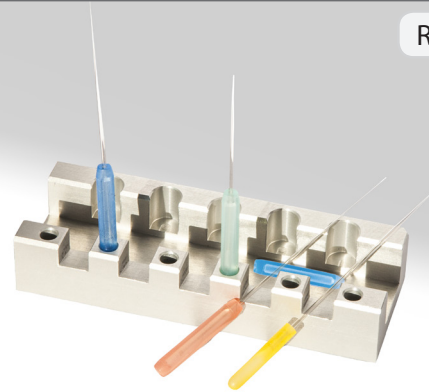
Cutter – left or right



Penholder



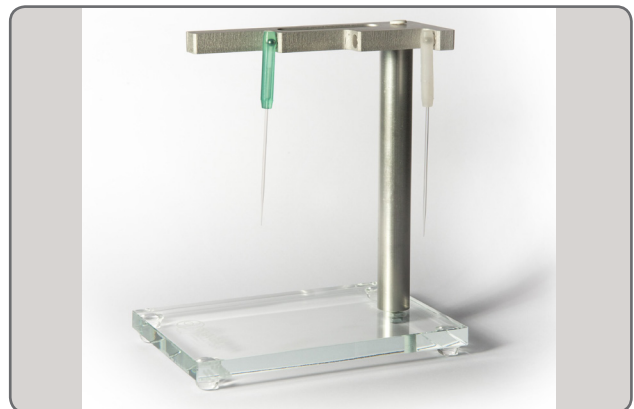
Rack



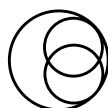
The autoclavable Synga penholder (handle), supplied separately, is designed to offer precision, ease of handling and a comfortable working position.

Synga Adhering System - SAS

Synga Adhering System helps keep your work place tidy. In SAS upper end of bulb or penholder adheres to the rack. Various versions of the rack are available to meet your needs and preferences.



Products and innovations from experienced embryologists
We proudly serve life-focused laboratories.



SYNGA
TOUCHING LIFE GENTLY