

## Denudation and Manipulation SYNGA pipettes for IVF

CE certified, sterile, MEA tested, non-toxic, safe for living cells.

### CATALOGUE

Revision: 02-2024



#### I. Classic (Compact) System

**SG pipettes without bulbs (bulbs sold separately):**

**SG Pipette, sterile, pack: 5x10 pipette - 50 pipettes in a pack**

**Denudation Short**  
– functional part 14 mm

SG-120S-50	inner Ø 120µm, red
SG-130S-50	inner Ø 130µm, red
SG-140S-50	inner Ø 140µm, green
SG-145S-50	inner Ø 145µm, green
SG-150S-50	inner Ø 150µm, white
SG-160S-50	inner Ø 160µm, white

**Denudation Long**  
– functional part 29 mm

SG-130L-50	inner Ø 130µm, red
SG-140L-50	inner Ø 140µm, green
SG-150L-50	inner Ø 150µm, white
SG-160L-50	inner Ø 160µm, white



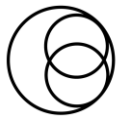
**Oocyte Vitrification**  
– polished tip

SG-140P-50	inner Ø 140µm
SG-150P-50	inner Ø 150µm

**Manipulation and Blastocyst transfer**  
– polished tip

SG-180-50	inner Ø 180µm, yellow
SG-250-50	inner Ø 250µm, blue





**SYNGA**  
TOUCHING LIFE GENTLY

### Classic Bulbs

*Bulbs - sterile, 4x5 pcs, sealed in a blister pack by 5 pieces, colour may be used to indicates the diameter of pipette*

#### A. Medium

SG-015-20MG	green
SG-015-20MY	yellow
SG-015-20MB	blue
SG-015-20MR	red
SG-015-20MW	white

#### B. Soft

SG-015-20SG	green
SG-015-20SY	yellow
SG-015-20SB	blue
SG-015-20SR	red
SG-015-20SW	white



### VI Bulbs

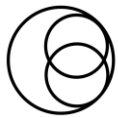
*Bulbs with reduced inner volume - sterile, 4x5 pcs, sealed in a blister pack by 5 pieces*

SG-VI-20XG	green
SG-VI-20XY	yellow
SG-VI-20XB	blue
SG-VI-20XR	red
SG-VI-20XW	white



**SYNGA s.r.o.**

Voděradská 2552, 251 01 Říčany u Prahy, Czech Republic  
[mail@synga.cz](mailto:mail@synga.cz), [www.synga.cz](http://www.synga.cz)



**SYNGA**  
TOUCHING LIFE GENTLY

### Accessories

SG-007-CUT-R	<b>SG Cutter.</b> Storage of unopened sealed pipettes and the cutter tool to be attached to the right-side wall of the IVF cabinet. Aluminium.
SG-007-CUT-L	<b>SG Cutter.</b> Storage of unopened sealed pipettes and the cutter tool to be attached to the left-side wall of the IVF cabinet. Aluminium.
SG-007-R-Black	<b>SG Cutter.</b> Biodegradable Black. Storage of unopened sealed pipettes and the cutter tool to be attached to the right-side wall of the IVF cabinet
SG-007-L-Black	<b>SG Cutter.</b> Biodegradable Black. Storage of unopened sealed pipettes and the cutter tool to be attached to the left-side wall of the IVF cabinet
SG-011-1	<b>SG Rack.</b> For storage of up to 6 open pipettes with bulbs in the working area in horizontal or vertical position
SG-021-3	<b>SG Pen Holder VI,</b> for VI bulbs
SG-021-4	<b>SG Pen Holder C,</b> for Classic bulbs



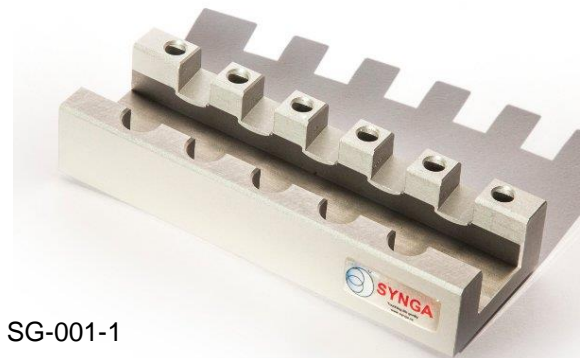
SG-007-CUT-R



SG-007-R-Black



SG-021-4



SG-001-1



SG-021-3



SG-021-3-Red

## II. Premounted system - bulb&pipette

*SG Pipette pack: 4x5 pipette with bulb attached, blister of 5 pieces, 4 in a box, sterile individually packed*

### A. Classic Bulb

SG-130S-20s	inner Ø 130µm, red bulb, short pipette
SG-130L-20s	inner Ø 130µm, red bulb, long pipette
SG-140S-20s	inner Ø 140µm, green bulb, short pipette
SG-140L-20s	inner Ø 140µm, green bulb, long pipette
SG-150S-20s	inner Ø 150µm, white bulb, short pipette
SG-150L-20s	inner Ø 150µm, white bulb, long pipette
SG-180-20s	inner Ø 180µm, yellow bulb, short pipette
SG-250-20s	inner Ø 250µm, blue bulb, short pipette

### B. VI Bulb

SG-130S-20vi	inner Ø 130µm, red bulb, short pipette
SG-130L-20vi	inner Ø 130µm, red bulb, long pipette
SG-140S-20vi	inner Ø 140µm, green bulb, short pipette
SG-140L-20vi	inner Ø 140µm, green bulb, long pipette
SG-150S-20vi	inner Ø 150µm, white bulb, short pipette
SG-150L-20vi	inner Ø 150µm, white bulb, long pipette
SG-150P-20vi	inner Ø 150µm, polished tip, suitable for vitrification
SG-180-20vi	inner Ø 180µm, yellow bulb, short pipette
SG-250-20vi	inner Ø 250µm, blue bulb, short pipette



### III. SAS - Synga Adhering System

#### Classic Bulbs with Adhering ball

Classic Bulbs including metal self-Adhering ball – in blister pack by 5 pieces:

##### A. Medium

SA-015-5MG	green
SA-015-5MY	yellow
SA-015-5MB	blue
SA-015-5MR	red
SA-015-5MW	white



##### B. Soft

SA-015-5SG	green
SA-015-5SY	yellow
SA-015-5SB	blue
SA-015-5SR	red
SA-015-5SW	white

#### Accessories

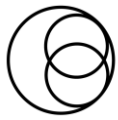
SA-011-1	<b>SA Magnetic Rack</b> , for storage of up to 6 open pipettes with SAS bulbs in the working area in horizontal or vertical position.
SA-021-2	<b>SA Pen Holder C</b> , Conical with magnetic dot - For manual holding with hole for push pull bulb and convenient manipulation, <b>one</b> sided, Dural, used with classical bulbs without metal ball
SA-008-R	<b>SA M dots Wall Rack</b> for Adhesive hanging up to 3 open pipettes with SAS bulbs or with a SAS Pen Holder. - <b>Right</b> side
SA-008-L	<b>SA M dots Wall Rack</b> for Adhesive hanging up to 3 open pipettes with SAS bulbs or with a SAS Pen Holder. - <b>Left</b> side
SA-003	<b>SA Base M dot Adhesive hang Rack</b> for storage of up to 3 open pipettes with SAS bulbs or pen holders



SA-008-L



SA-003



**SYNGA**  
TOUCHING LIFE GENTLY

#### IV. Samples

**SG Pipettes and Bulbs, 10x pipette + 1x Bulb M + 1x Bulb S + 1x Bulb VI**

SG-130S-10ms+vi	inner Ø 130µm, red bulbs, short pipette
SG-140S-10ms+vi	inner Ø 140µm, green bulbs, short pipette
SG-140L-10ms+vi	inner Ø 140µm, green bulbs, long pipette
SG-150S-10ms+vi	inner Ø 150µm, white bulbs, short pipette
SG-150L-10ms+vi	inner Ø 150µm, white bulbs, long pipette
SG-160S-10ms+vi	inner Ø 160µm, white bulbs, short pipette
SG-180-10ms+vi	inner Ø 180µm, yellow bulbs, short pipette
SG-250-10ms+vi	inner Ø 250µm, blue bulbs, short pipette



**Premounted – pipettes with bulb attached, blister of 5 pieces**

SG-130S-5vi	inner Ø 130µm, red bulb, short pipette
SG-130L-5vi	inner Ø 130µm, red bulb, long pipette
SG-140S-5vi	inner Ø 140µm, green bulb, short pipette
SG-140L-5vi	inner Ø 140µm, green bulb, long pipette
SG-150S-5vi	inner Ø 150µm, white bulb, short pipette
SG-150L-5vi	inner Ø 150µm, white bulb, long pipette
SG-180-5vi	inner Ø 180µm, yellow bulb, short pipette
SG-250-5vi	Inner Ø 250µm, blue bulb, short pipette



**SYNGA s.r.o.**

Voděradská 2552, 251 01 Říčany u Prahy, Czech Republic  
[mail@synga.cz](mailto:mail@synga.cz), [www.synga.cz](http://www.synga.cz)

## V. Micromanipulation Pipettes

For use with a micromanipulator in IVF. Sterile, MEA, non-toxic, safe for living cells. Individually sealed pipettes in a box.

### ICSI Injection SG Pipettes

SG-X30S-10	ICSI Pipette with spike, OD 5-7µm, ID 4-5µm, angle 30°, pack: 10x1 pipette
SG-X35S-10	ICSI Pipette with spike, OD 5-7µm, ID 4-5µm, angle 35°, pack: 10x1 pipette

### TESE SG Pipettes

SG-X30T-10	ICSI Pipette TESE, no spike, OD 7-9µm, ID 5-7µm, angle 30°, pack: 10x1 pipette
SG-X35T-10	ICSI Pipette TESE, no spike, OD 7-9µm, ID 5-7µm, angle 35°, pack: 10x1 pipette

### SLIM SG Pipettes

SG-SLIMX30-10	ICSI SLIM Pipette with spike, ID 4-5µm, angle 30°, pack: 10x1 pipette
SG-SLIMX35-10	ICSI SLIM Pipette with spike, ID 4-5µm, angle 35°, pack: 10x1 pipette

### Holding SG Pipettes

SG-H30a-10	Holding Pipette, OD 90-110µm, ID 15-20µm, angle 30°, pack: 10x1 pipette
SG-H35a-10	Holding Pipette, OD 90-110µm, ID 15-20µm, angle 35°, pack: 10x1 pipette
SG-H30b-10	Holding Pipette, OD 110-130µm, ID 20-23µm, angle 30°, pack: 10x1 pipette
SG-H35b-10	Holding Pipette, OD 110-130µm, ID 20-23µm, angle 35°, pack: 10x1 pipette

### Biopsy SG Pipettes

SG-B30B-10	Blastomere Biopsy, Day 3, ID 35-42µm, angle 30°, pack: 10x1 pipette
SG-B35B-10	Blastomere Biopsy, Day 3, ID 35-42µm, angle 35°, pack: 10x1 pipette

SG-B30Ta-10	Blastocyst Biopsy, Day 5-6, Trophoectoderm, ID 25-30µm, angle 30°, pack: 10x1 pipette
SG-B35Ta-10	Blastocyst Biopsy, Day 5-6, Trophoectoderm, ID 25-30µm, angle 35°, pack: 10x1 pipette
SG-B30Tb-10	Blastocyst Biopsy, Day 5-6, Trophoectoderm, Universal, ID 30-35µm, angle 30°, pack: 10x1 pipette
SG-B35Tb-10	Blastocyst Biopsy, Day 5-6, Trophoectoderm, Universal, ID 30-35µm, angle 35°, pack: 10x1 pipette

SG-B30P-10	Polar Body Biopsy, ID 10-15µm, angle 30°, pack: 10x1 pipette
SG-B35P-10	Polar Body Biopsy, ID 10-15µm, angle 35°, pack: 10x1 pipette

### Piezo Drill ICSI pipettes

SG-XPi25-10	Piezo Drill ICSI Pipette, ID 6 µm, angle 25°
-------------	--

