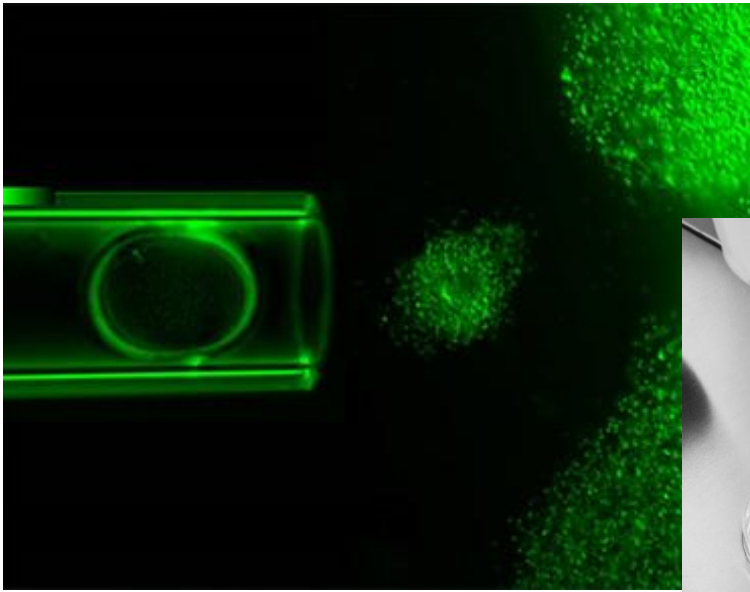


**SYNGA**  
TOUCHING LIFE GENTLY

# Synga Premounted

**Denudation and Manipulation System for Streamlined Routines in IVF Labs**



**CE** 2265

ISO 13485:2016



Synga Premounted is a ready-to-use pipette and bulb system for oocyte denudation or gamete and embryo handling (including PGD and vitrification), designed for use with a handle accessory (penholder).

Each pipette is fitted with an aspiration bulb, creating a reliable seal, which is not always guaranteed with customer assembled systems. This time-saving combined unit enables a faster set-up. Colour coding of bulbs allows straightforward differentiation of diameters. High quality borosilicate glass minimizes the risk of oil attaching to the inner surface – no oil clogging.

The autoclavable Synga penholder (handle), supplied separately, is designed to offer precision, ease of handling and a comfortable working position.

All Synga pipettes are sterile and MEA tested. Synga is ISO 13485:2016 certified.

**SYNGA s.r.o.**

Voděradská 2552, 251 01 Říčany u Prahy, Czech republic  
[mail@synga.cz](mailto:mail@synga.cz), [www.synga.cz](http://www.synga.cz)

## Denudation and Manipulation SYNGA pipettes for IVF

CE certified, sterile, MEA tested, non toxic, safe for living cells.

### SYNGA Premounted system - bulb&pipette

SG Pipette pack: 4x5 pipette with bulb attached, blister sheets of 5 pipettes, 4 in a box, sterile single packed

#### 1. Classic Bulb

##### a. Denudation

SG-130S-20s	inner Ø 130µm, red bulb, short pipette
SG-130L-20s	inner Ø 130µm, red bulb, long pipette
SG-140S-20s	inner Ø 140µm, green bulb, short pipette
SG-140L-20s	inner Ø 140µm, green bulb, long pipette
SG-150S-20s	inner Ø 150µm, white bulb, short pipette
SG-150L-20s	inner Ø 150µm, white bulb, long pipette

##### b. Vitrification

SG-130P-20s	inner Ø 130µm, polished tip
SG-140P-20s	inner Ø 140µm, polished tip
SG-150P-20s	inner Ø 150µm, polished tip

##### c. Manipulation and Blastocyst transfer

SG-180-20s	inner Ø 180µm, yellow bulb, short pipette
SG-250-20s	inner Ø 250µm, blue bulb, short pipette



#### 2. VI Bulb

##### a. Denudation

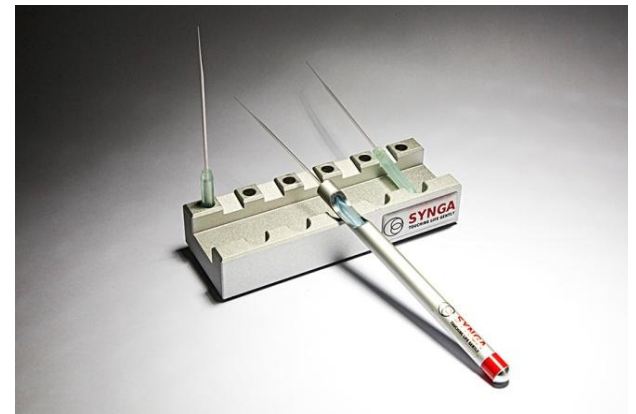
SG-120S-20vi	inner Ø 120µm, red bulb, short pipette
SG-120L-20vi	inner Ø 120µm, red bulb, long pipette
SG-130S-20vi	inner Ø 130µm, red bulb, short pipette
SG-130L-20vi	inner Ø 130µm, red bulb, long pipette
SG-140S-20vi	inner Ø 140µm, green bulb, short pipette
SG-140L-20vi	inner Ø 140µm, green bulb, long pipette
SG-150S-20vi	inner Ø 150µm, white bulb, short pipette
SG-150L-20vi	inner Ø 150µm, white bulb, long pipette

##### b. Vitrification

SG-130P-20vi	inner Ø 130µm, polished tip
SG-140P-20vi	inner Ø 140µm, polished tip
SG-150P-20vi	inner Ø 150µm, polished tip

##### c. Manipulation and Blastocyst transfer

SG-180-20vi	inner Ø 180µm, yellow bulb, short pipette
SG-250-20vi	inner Ø 250µm, blue bulb, short pipette



Various accessories available. Other diameters on demand.  
For details visit [www.synga.cz](http://www.synga.cz)

**SYNGA s.r.o.**

Voděradská 2552, 251 01 Říčany u Prahy, Czech republic  
[mail@synga.cz](mailto:mail@synga.cz), [www.synga.cz](http://www.synga.cz)